

Drought & Regional Leadership in the Santa Ana River Watershed

**The “No-Regrets” Path
Drought, El Nino, and
Resiliency**

**Director Al Lopez
Santa Ana Watershed
October 2015**



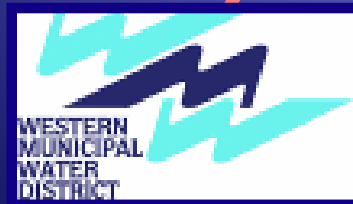
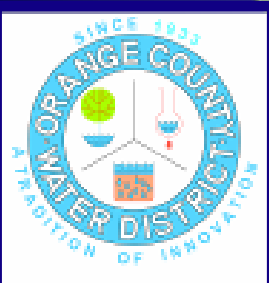
What is SAWPA?

Santa Ana Watershed Project Authority

SAWPA Member Agencies & Stakeholders



- 97 Water-related Agencies
- 4 Counties
- 59 Cities
- State water, environmental, and regulatory agencies
- Federal Agencies
- Special Districts



A composite image featuring the monster Godzilla El Niño on the left, standing against a background of a globe with a large red stain. The text "GODSEND" is at the top, "or" is in the middle, "GODZILLA" is below that, and "El Niño" is at the bottom.

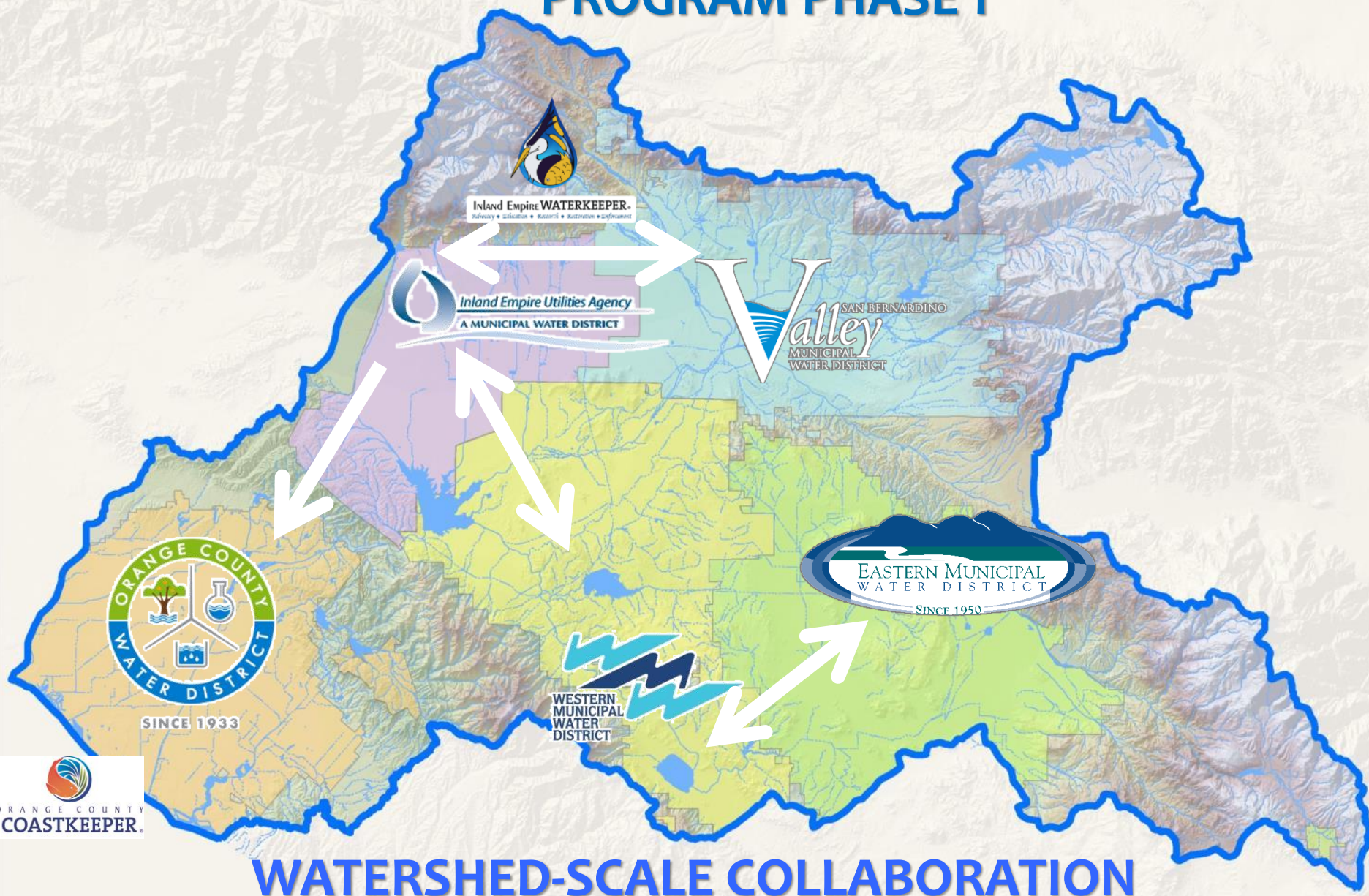
GODSEND

or

GODZILLA

El Niño

SANTA ANA RIVER CONSERVATION & CONJUNCTIVE USE PROGRAM PHASE 1





Building a Conservation Budget Based Rate Structure

INDOOR NEED



OUTDOOR NEED

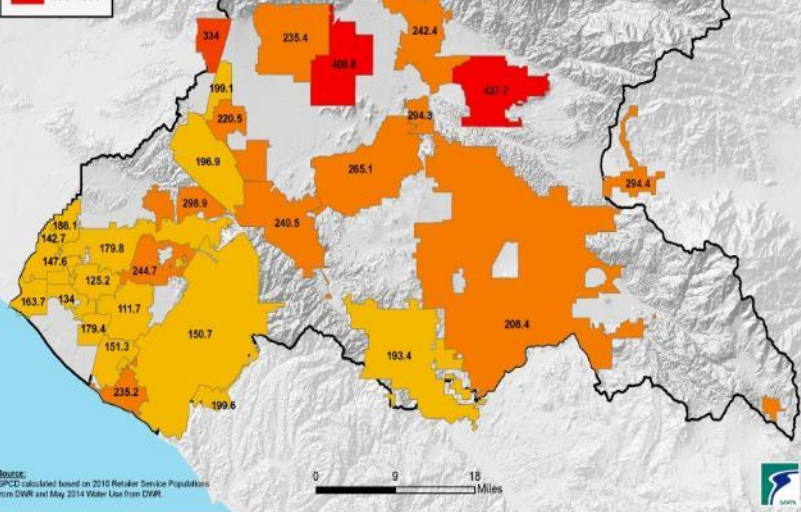
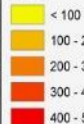


ADJUSTMENTS



Gallons per Capita per Day (GPCD) Water Use by Retailers

GPCD

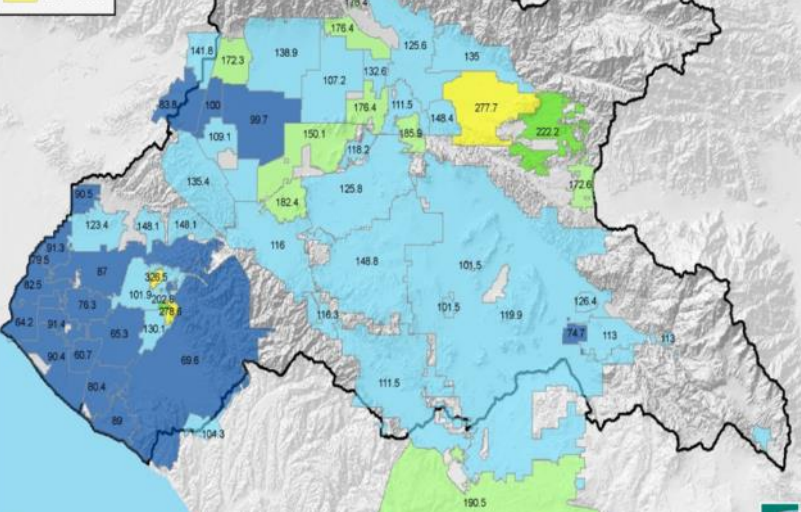


Before

May 2014

Gallons per Capita per Day (GPCD) Water Use by Retailers

GPCD (8/2015)



After

August 2015

Recycled water at Construction sites saves enough drinking water for 500 families.



